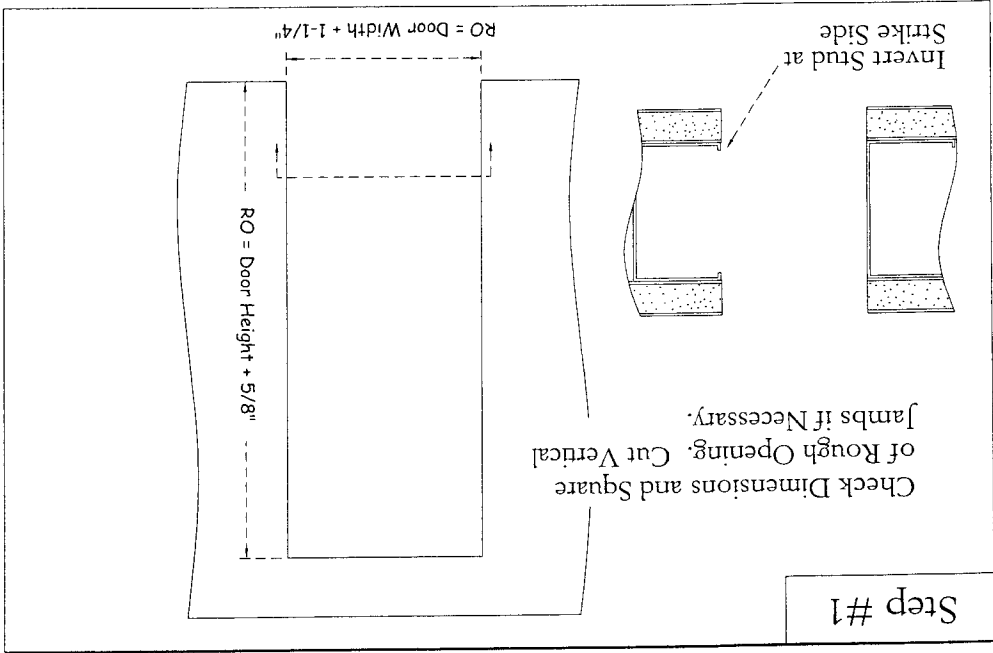


# Frameworks Manufacturing, Inc.

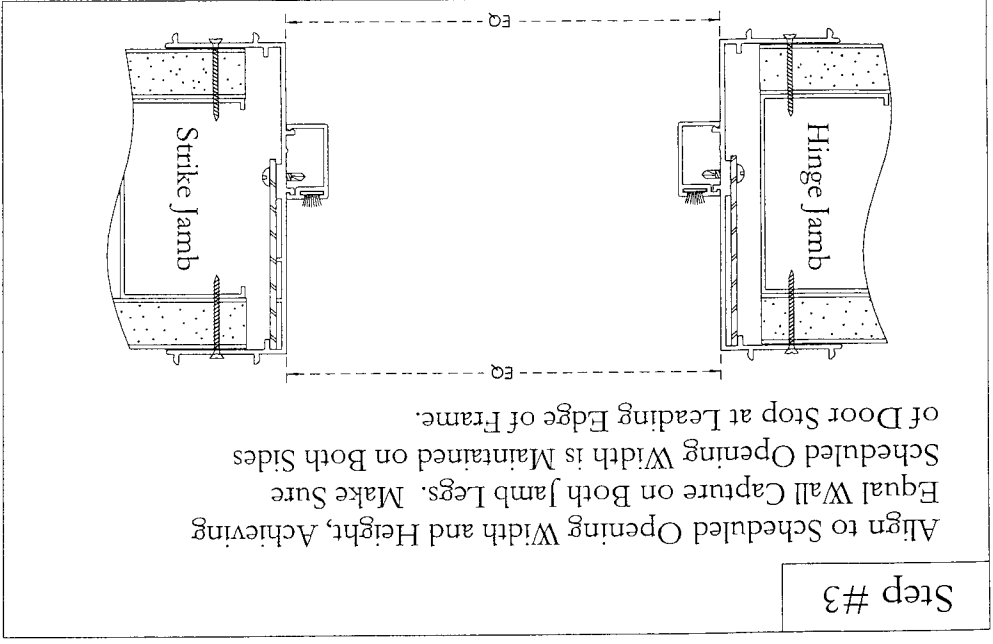
Installation Manual for the Type-2 Door  
& Window Frame System

# Installation Instructions - Type 2 - Aluminum Door Frames

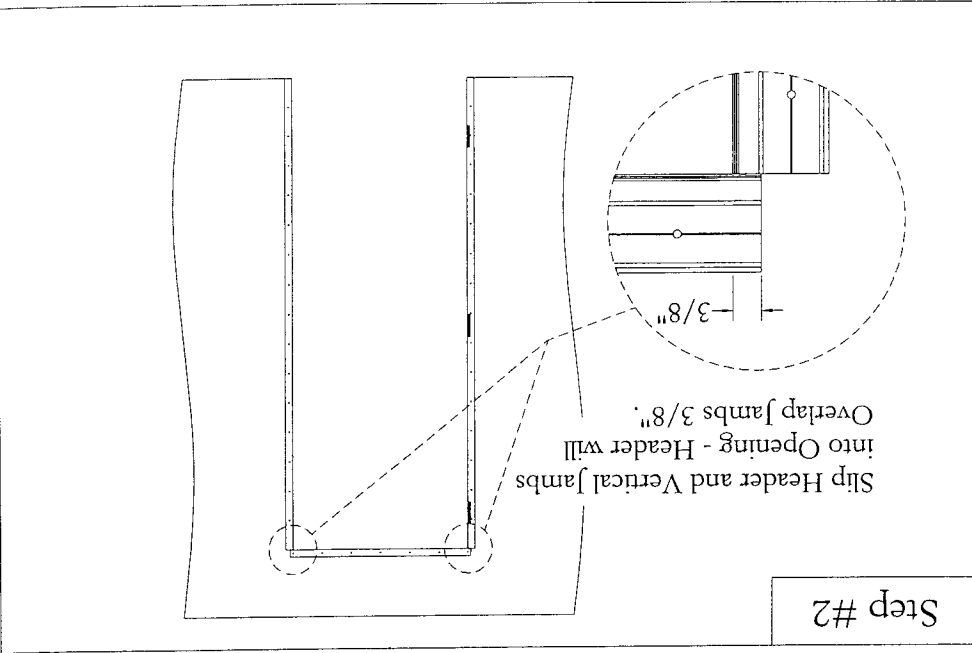
Step #1



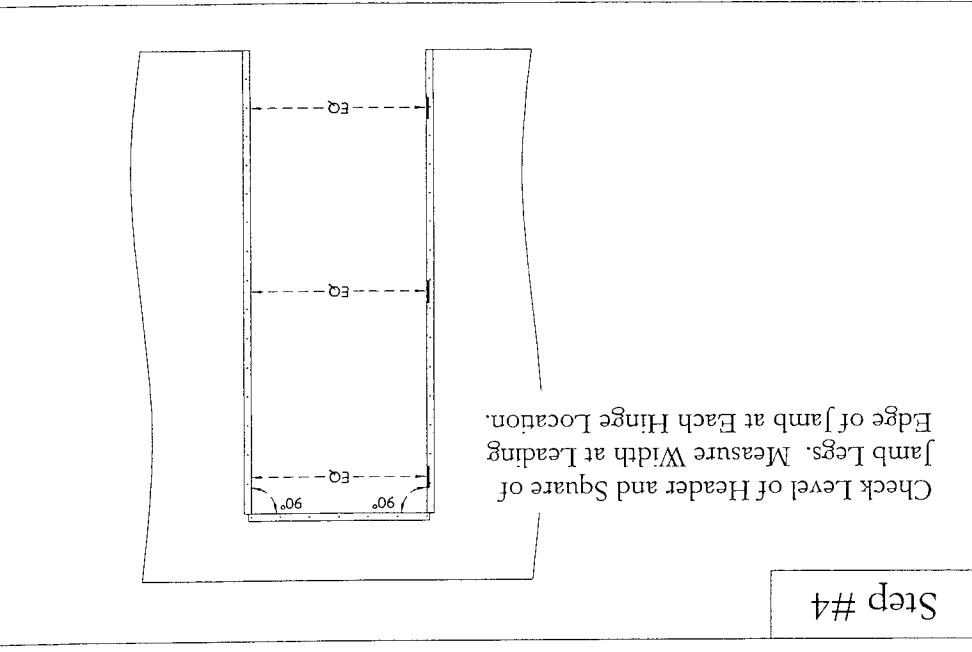
Step #3



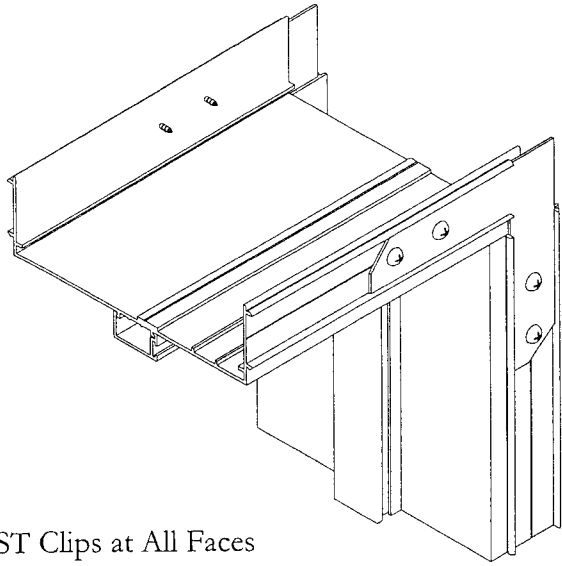
Step #2



Step #4



### Step #5

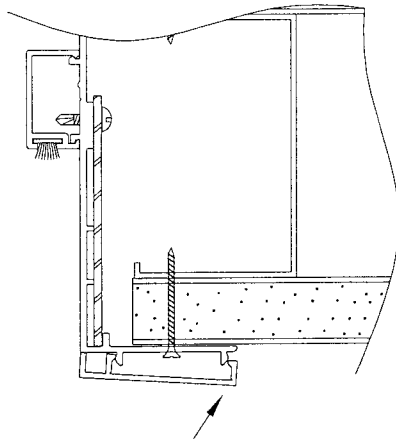


Attach the 4ea C100ST Clips at All Faces of Jamb and Header with 8-1/2" TEK Screws.

### Step #6

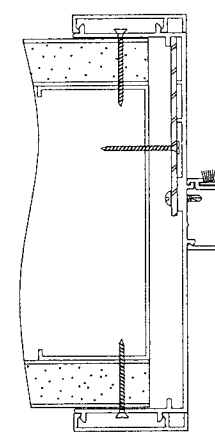
Check Square/Plumb of Opening. Anchor Jamb to Wall Using #6 x 1-5/8" Drywall Screws Through Round Holes Nearest Top and Bottom at Each Hinge and 12" O.C. Elsewhere. Attachment Should Roughly Align on Both Front Faces.

### Step #7

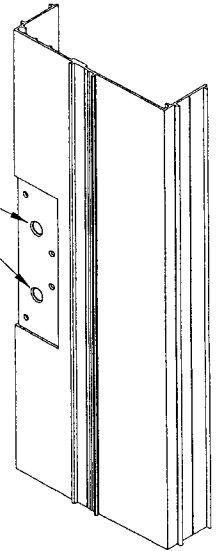


Install Trim Starting With the Verticals. Install by Hooking Inside Legs on Receiver Tab and Lightly Tapping with Rubber Mallet Toward Outside Edge.

### Step #8

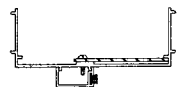


Attach to Framing with #12 x 1" Screws at Each Hinge Location.

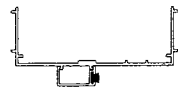


Note:  
45 Minute Rated Frame Require the Attachment of the Hinge Backup Plates to the Wall Framing

### Parts List



Hinge/Strike Jamb Assembly



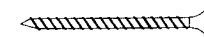
Header Assembly



4ea. C100ST Angle Plates



8ea. #8 x 1/2" TEK Screws



50ea. # 6 x 1-1/4" Drywall Screws

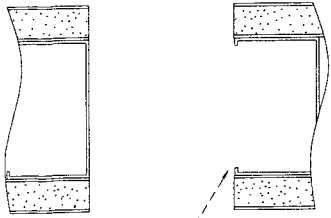


4ea. Vertical Jamb Trim and 2ea. Header Trim

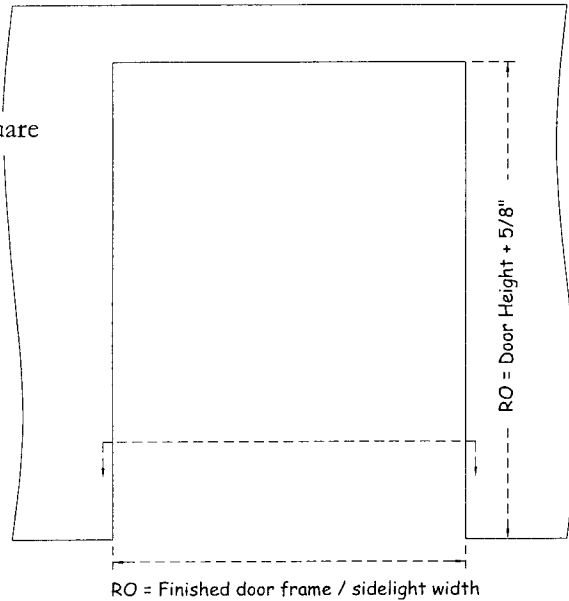
# Installation Instructions - Type 2 - Sidelight Door Frames

## Step #1

Check Dimensions and Square of Rough Opening.

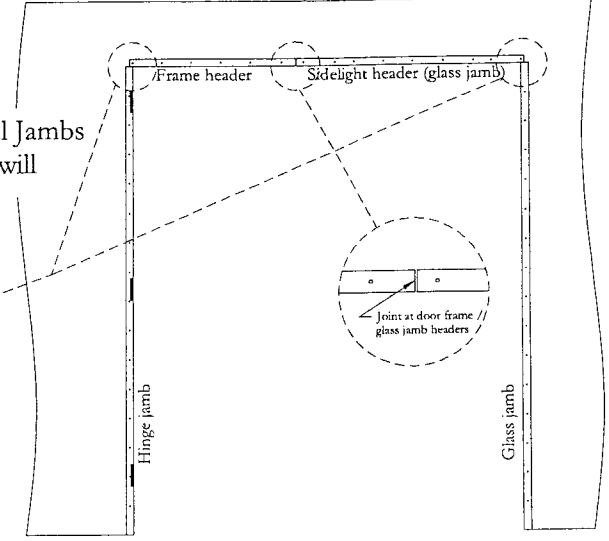
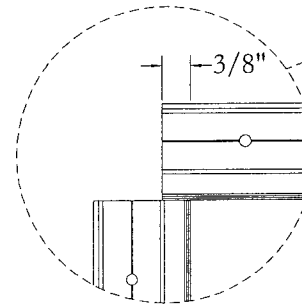


Invert stud at sidelight side



## Step #2

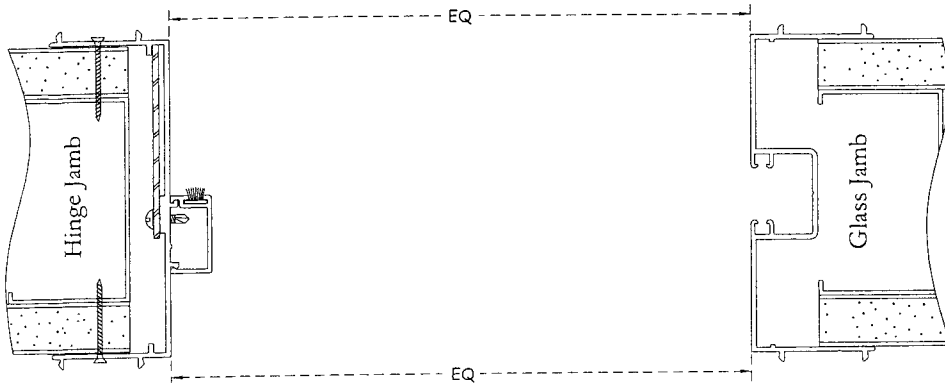
Slip Header and Vertical Jamb into Opening - Header will Overlap Jamb  $3/8$ ".



## Step #3

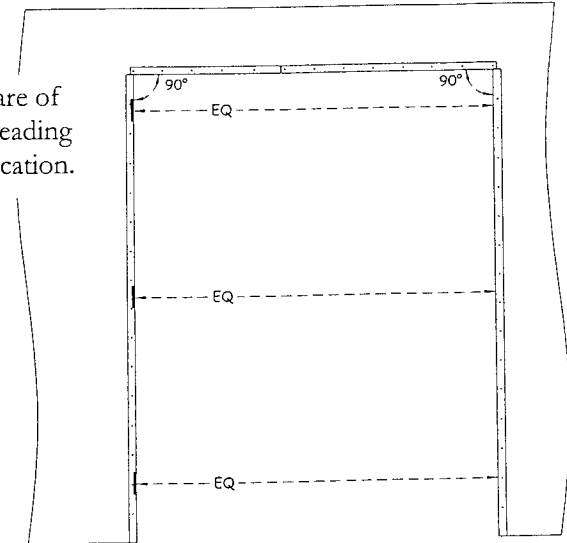
Align to Scheduled Opening Width and Height, Achieving Equal Wall Capture on Both Jamb Legs.

Do not attach glass jamb to wall until all horizontal glass members have been installed.



## Step #4

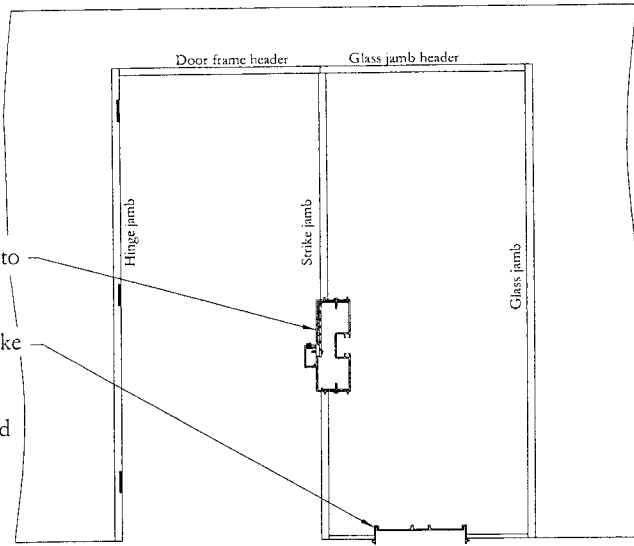
Check Level of Header and Square of Jamb Legs. Measure Width at Leading Edge of jamb at Each Hinge Location.



### Step #5

Install snap-in glass pocket into strike jamb.

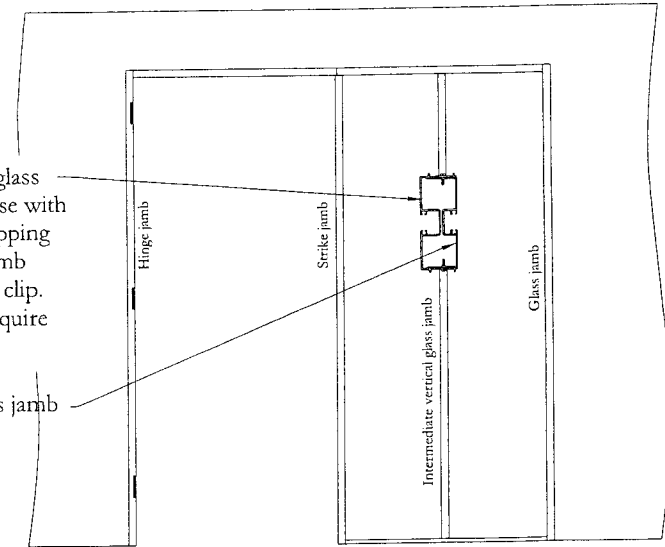
Install glass base between strike jamb and glass jamb. (see clipping diagram) Glass base typically sets on 3/4" plywood which is supplied by others.



### Step #6

Install intermediate vertical glass jamb and secure to Glass base with 4 each C406ST clips (see clipping diagram). Secure to Glass jamb header with T-clip or BOSS clip. (Installing with T clip will require field notching of trim)

Insert glass pocket into glass jamb and secure with screws.

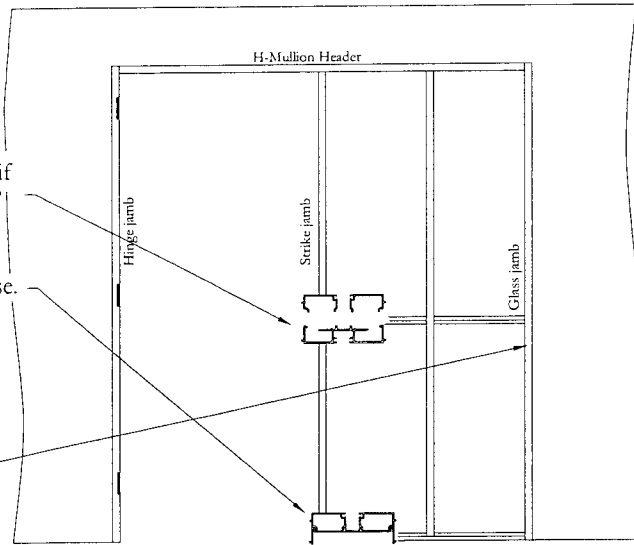


### Step #7

Install mid-height glass base (if required) with 4 each C406ST clips. (see clipping diagram)

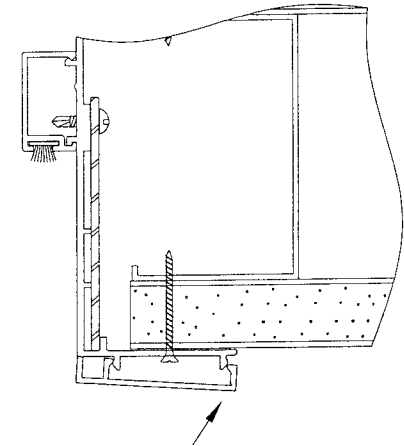
Install glass stops on glass base.

Attach glass jamb to wall framing with drywall screws after the installation of all horizontal glass members.



### Step #8

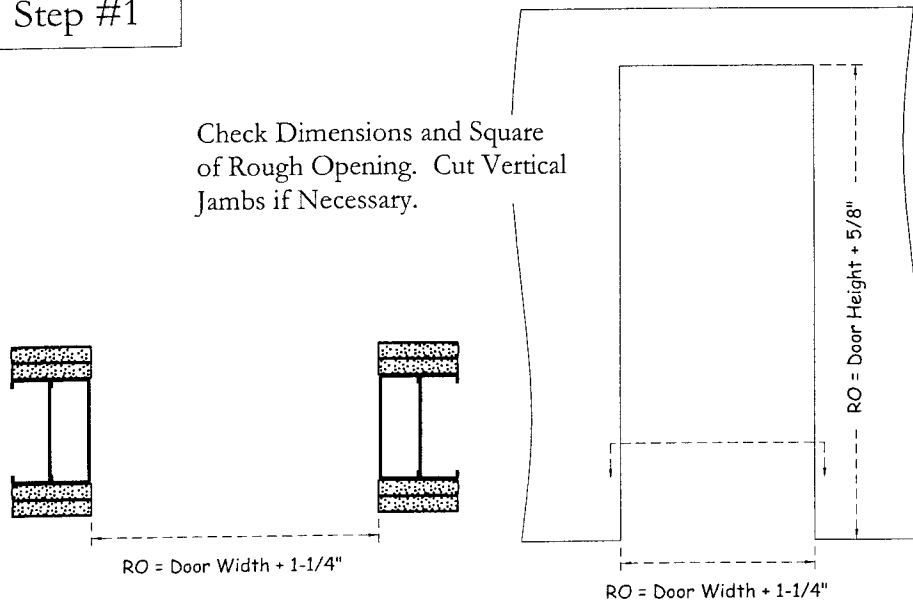
Install Trim Starting With the Verticals. Install by Hooking Inside Legs on Receiver Tab and Lightly Tapping with Rubber Mallet Toward Outside Edge.



# Installation Instructions - 90 Minute Rated Aluminum Door Frames

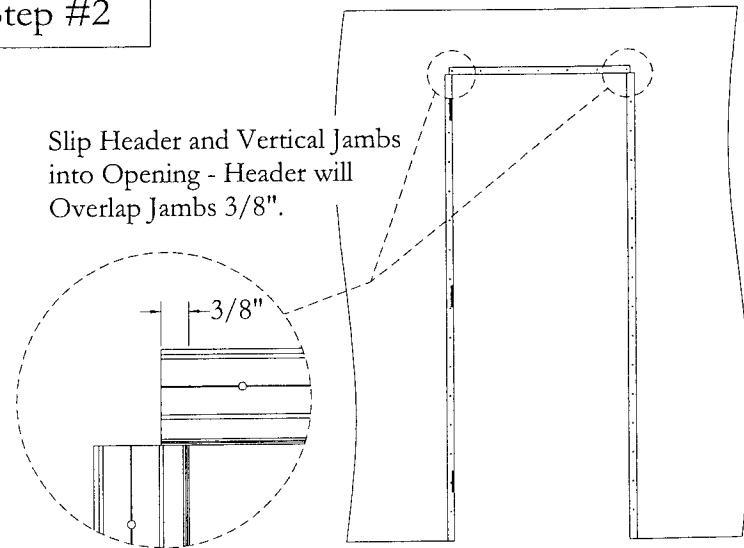
## Step #1

Check Dimensions and Square of Rough Opening. Cut Vertical Jamb if Necessary.



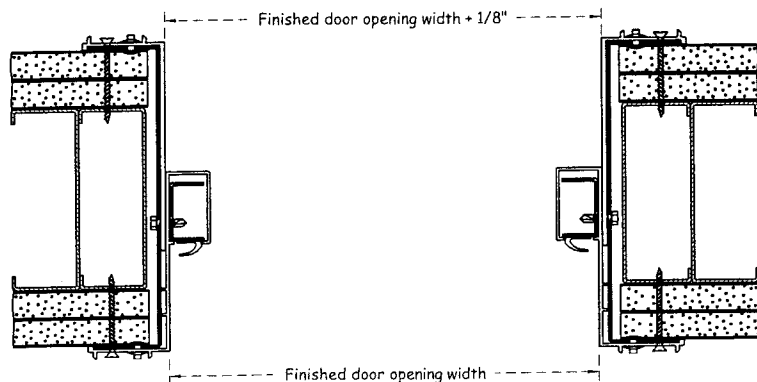
## Step #2

Slip Header and Vertical Jamb into Opening - Header will Overlap Jamb  $3/8"$ .



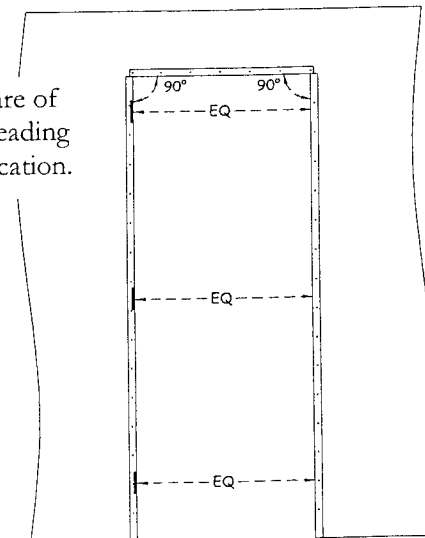
## Step #3

Align to Scheduled Opening Width and Height, Achieving Equal Wall Capture on Both Jamb Legs. Make Sure Scheduled Opening Width is Maintained on Both Sides of Door Stop at Leading Edge of Frame.

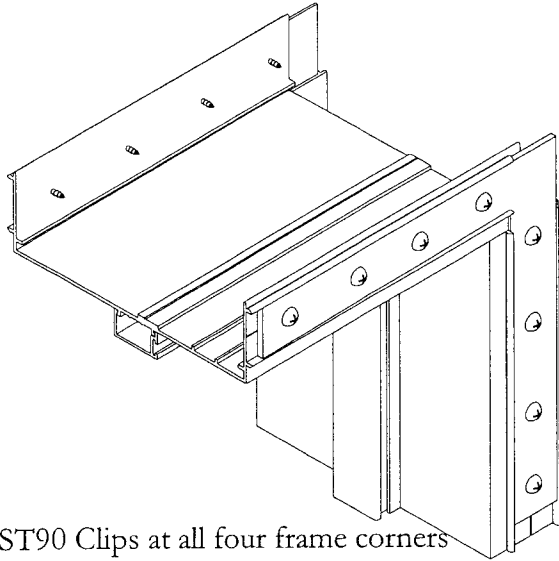


## Step #4

Check Level of Header and Square of Jamb Legs. Measure Width at Leading Edge of Jamb at Each Hinge Location.



### Step #5

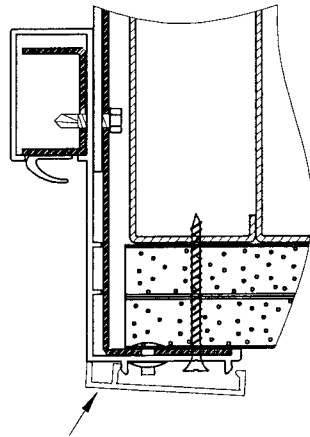


Attach the 4ea C100ST90 Clips at all four frame corners of Jamb and Header with 2-1/2" drywall screws per clip.

### Step #6

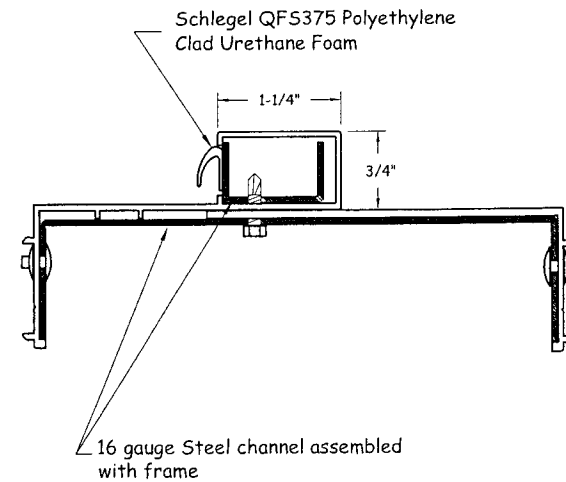
Check Square/Plumb of Opening. Anchor Jamb to Wall Using 2-1/2" Drywall Screws Through Round Holes Nearest Top and Bottom at Each Hinge and 12" O.C. Elsewhere. Attachment Should Roughly Align on Both Front Faces.

### Step #7



Install Trim Starting With the Verticals. Install by Hooking Inside Legs on Receiver Tab and Lightly Tapping with Rubber Mallet Toward Outside Edge.

### Frame Section Detail



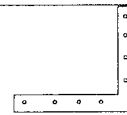
### Parts List



Hinge/Strike Jamb Assembly



Header Assembly



4ea. C100ST90 Angle Clips



4ea. Vertical Jamb Trim and 2ea. Header Trim

# Frameworks Manufacturing, Inc.

## Type 2 Clipping Diagrams

See sheet 4 for alternative "boss" clip installation in lieu of the previously detailed T-clip installation.

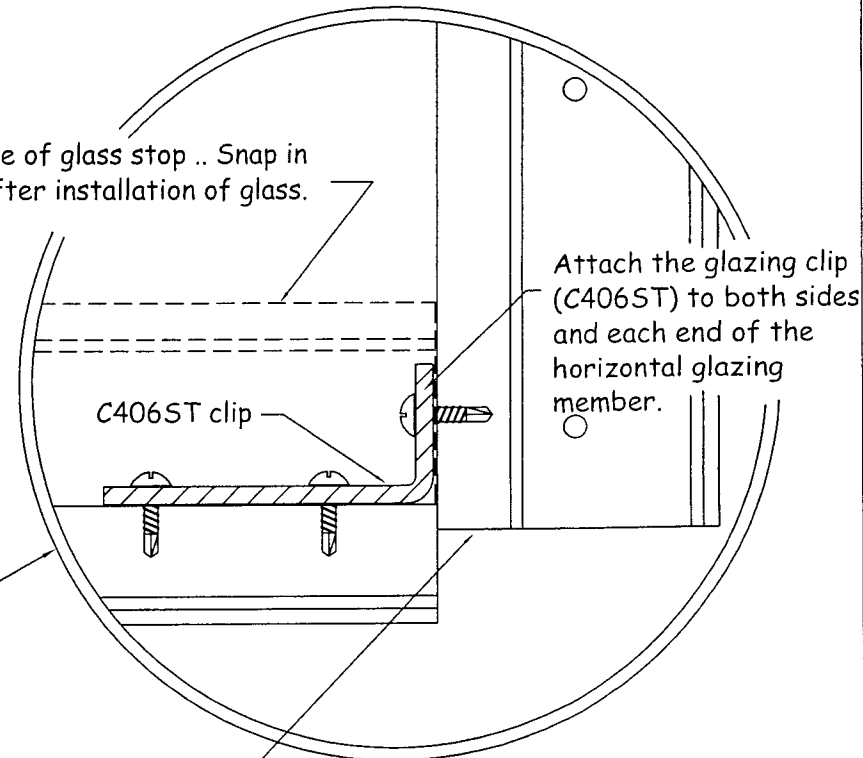
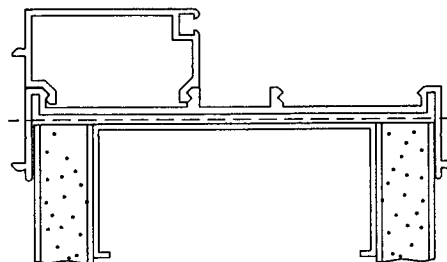
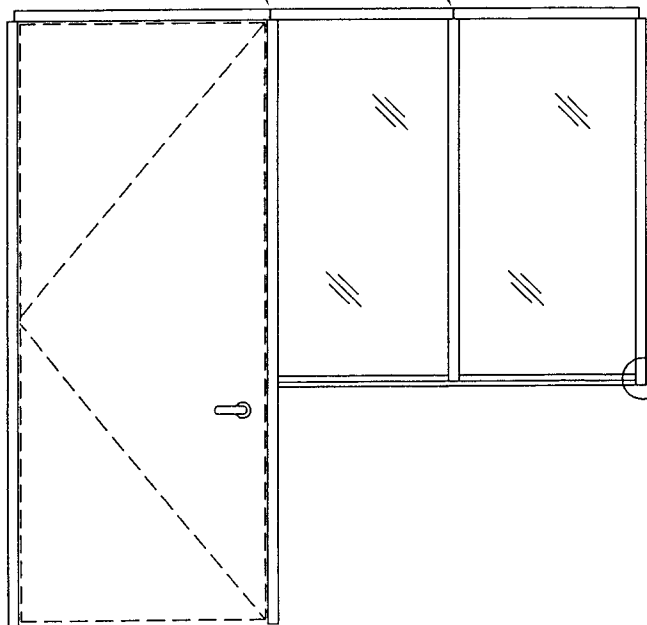
If required, the splice joint over the window frames will always be located at intersection of an intermediate vertical mullion.

Line of glass stop .. Snap in place after installation of glass.

C406ST clip

Attach the glazing clip (C406ST) to both sides and each end of the horizontal glazing member.

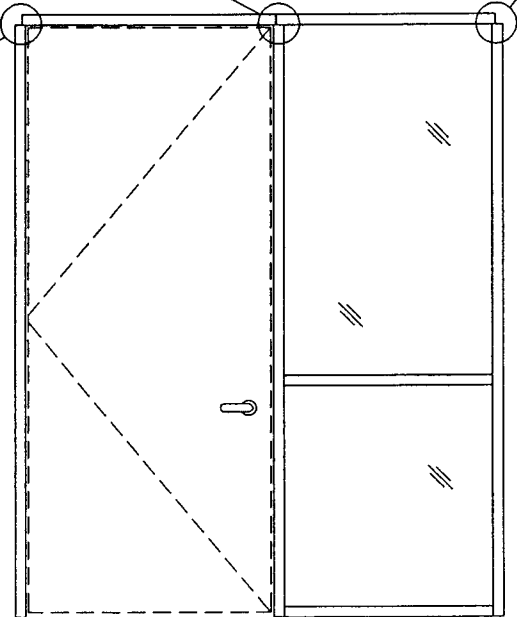
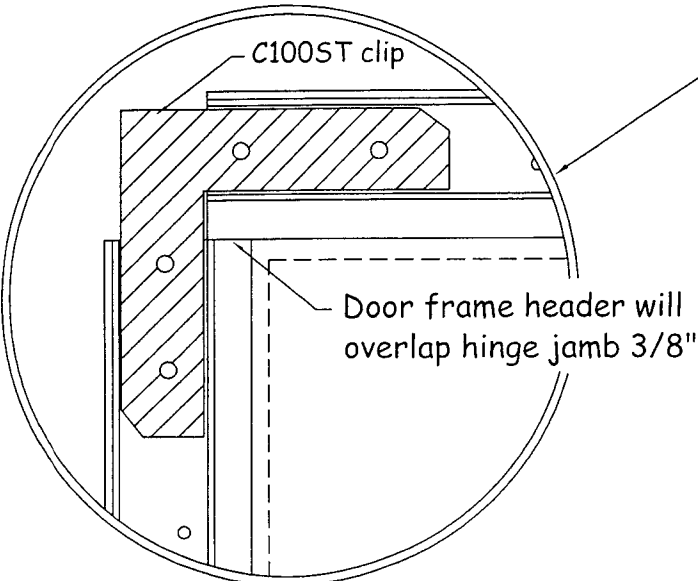
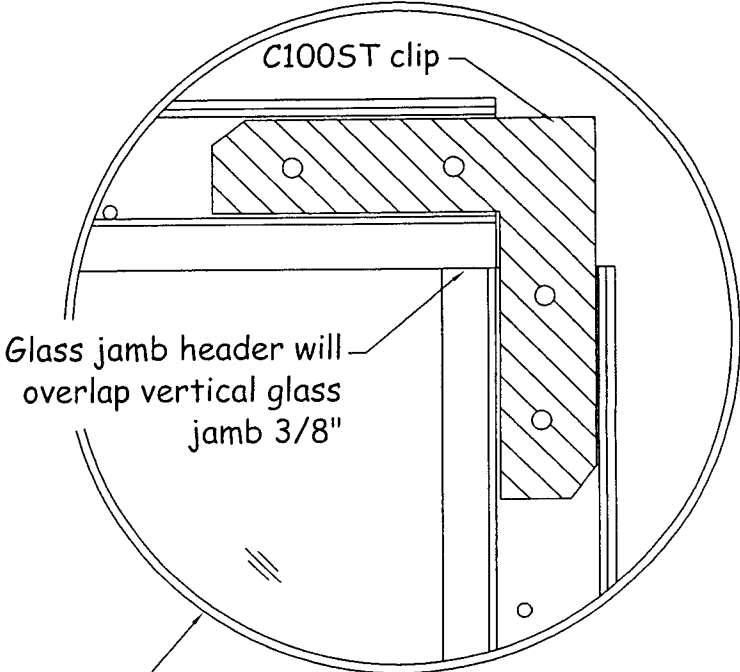
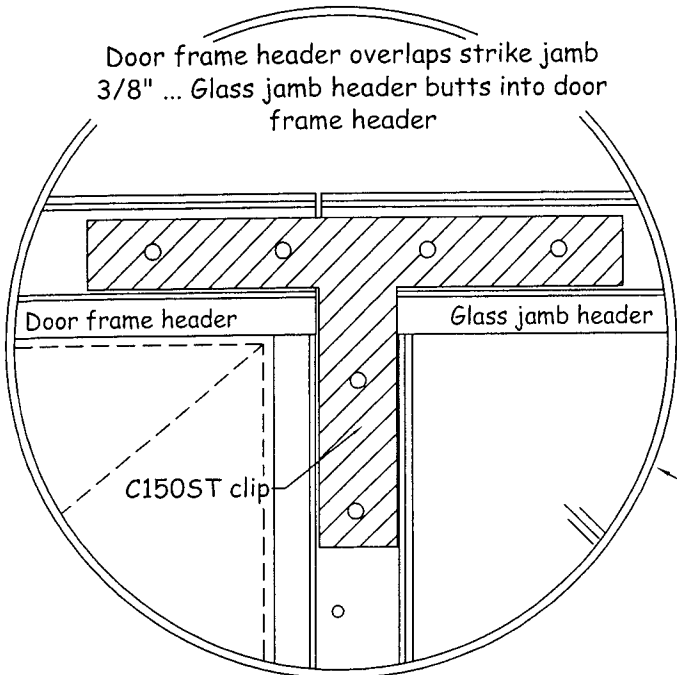
The vertical glass jamb should be located at the bottom "web" of the glass base.





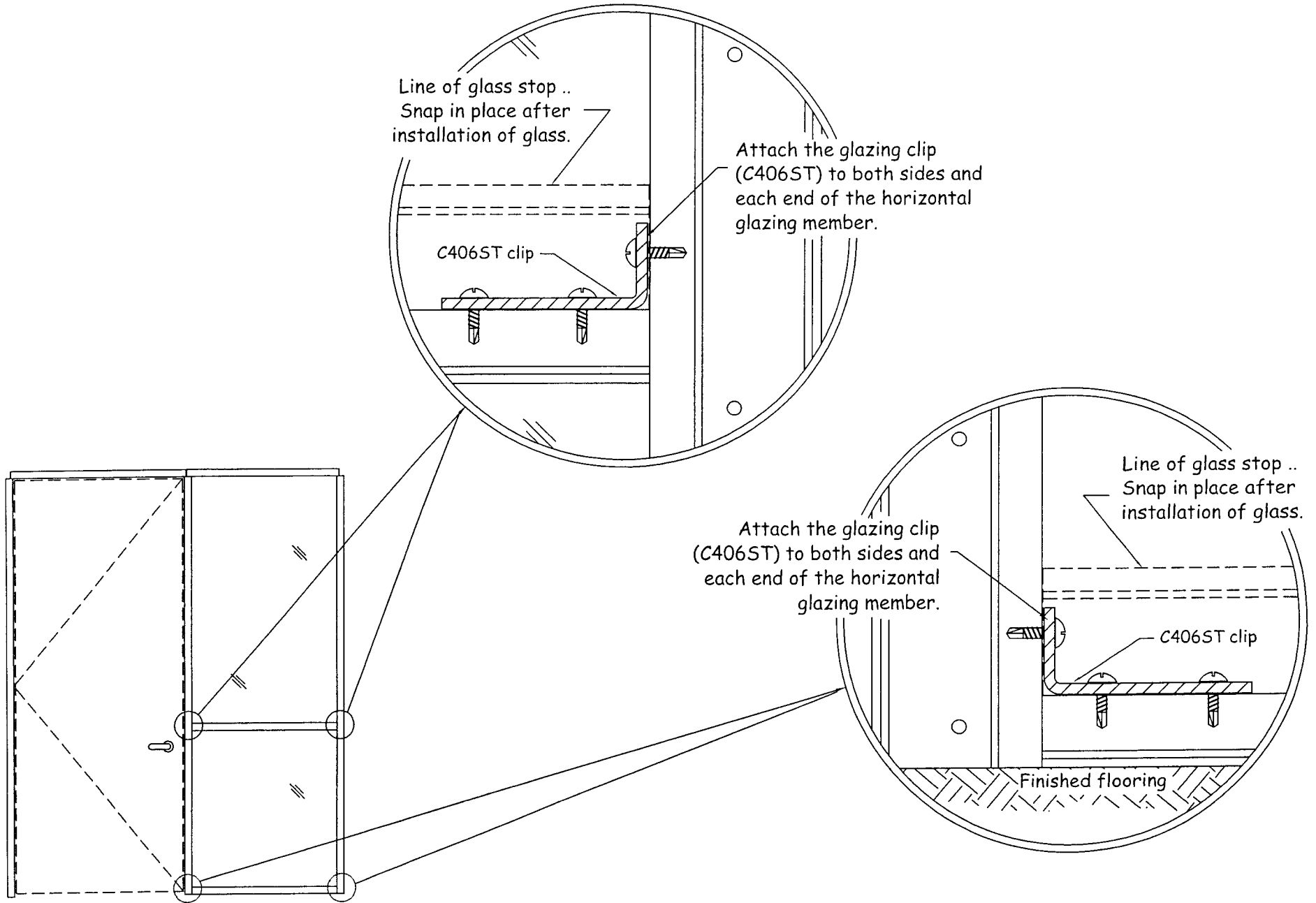
# Frameworks Manufacturing, Inc.

## Type 2 Clipping Diagrams



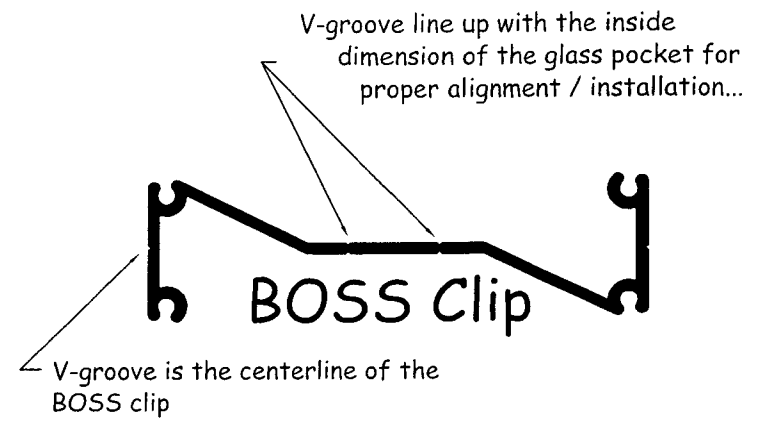
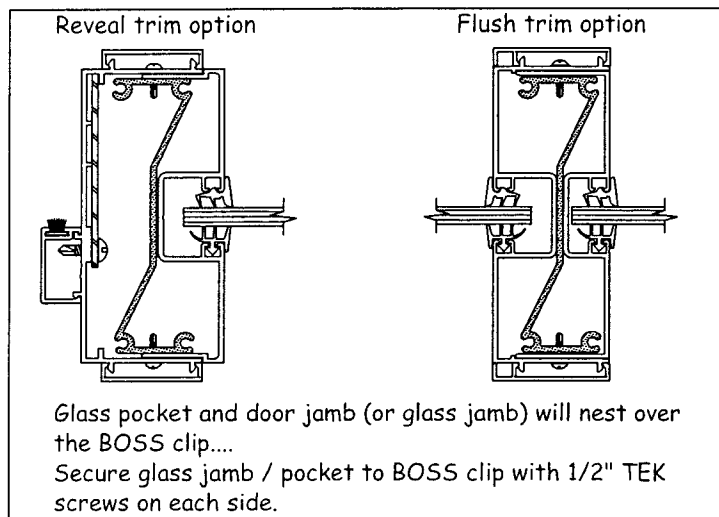
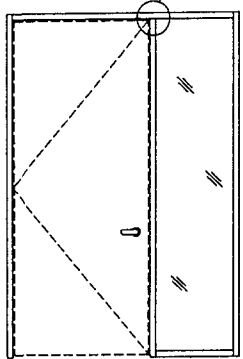
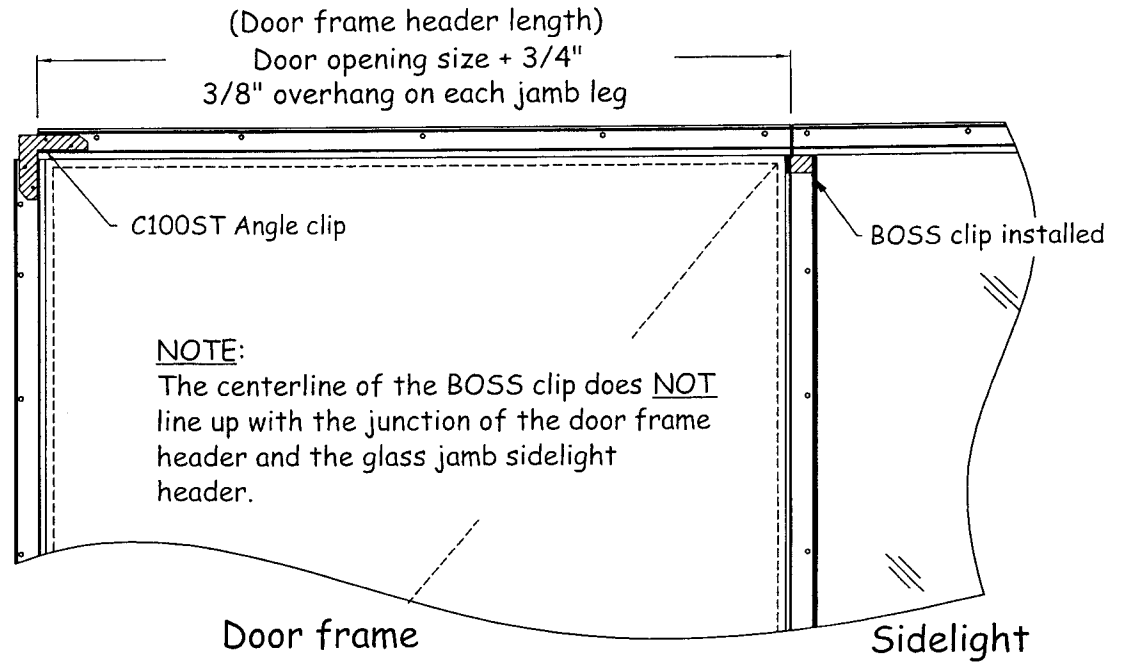
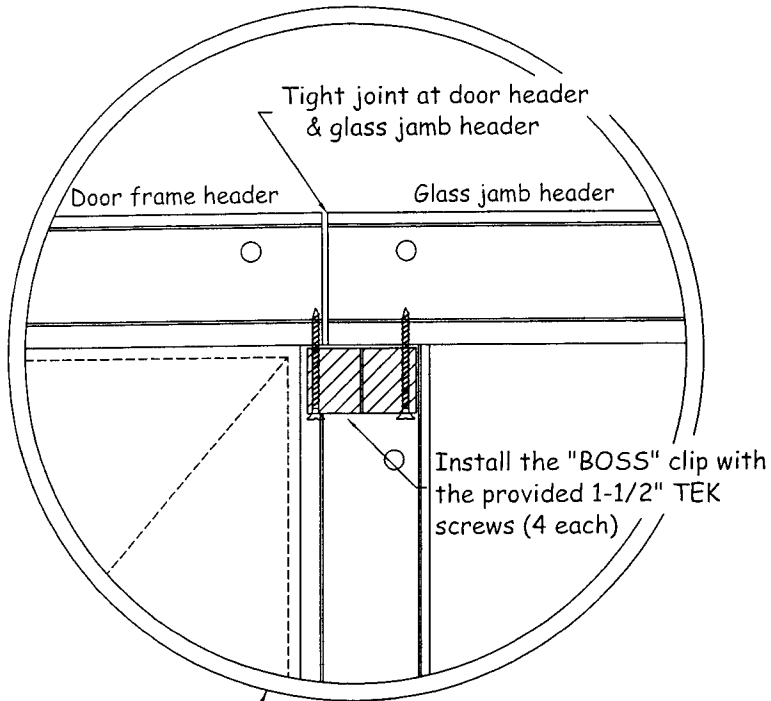
# Frameworks Manufacturing, Inc.

## Type 2 Clipping Diagrams

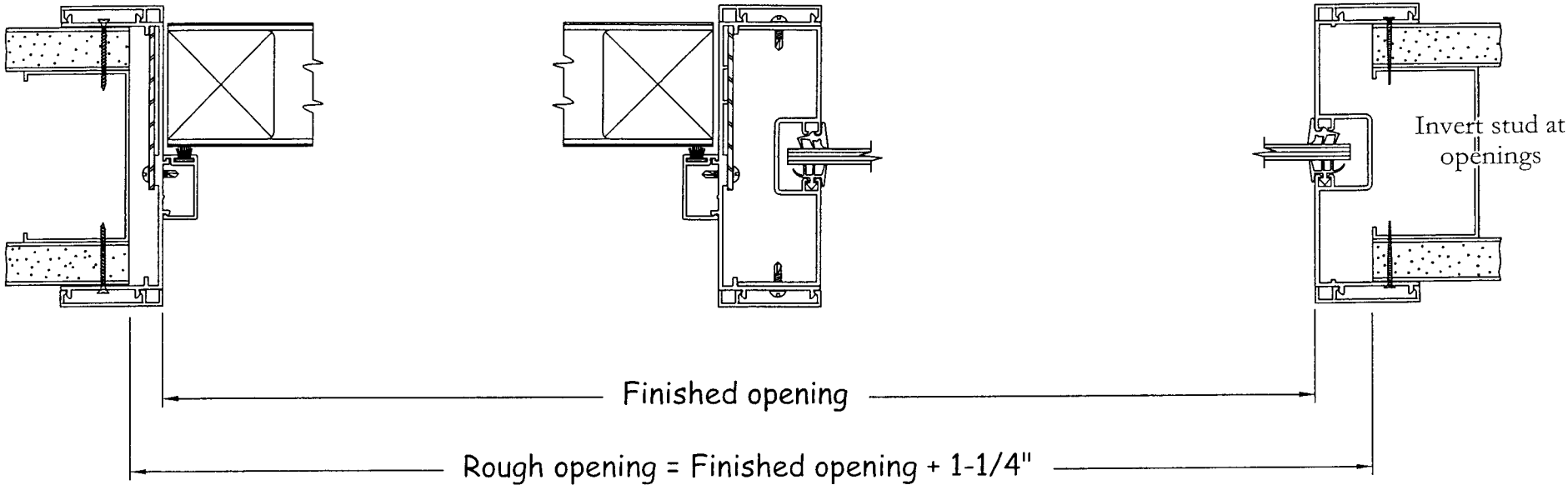
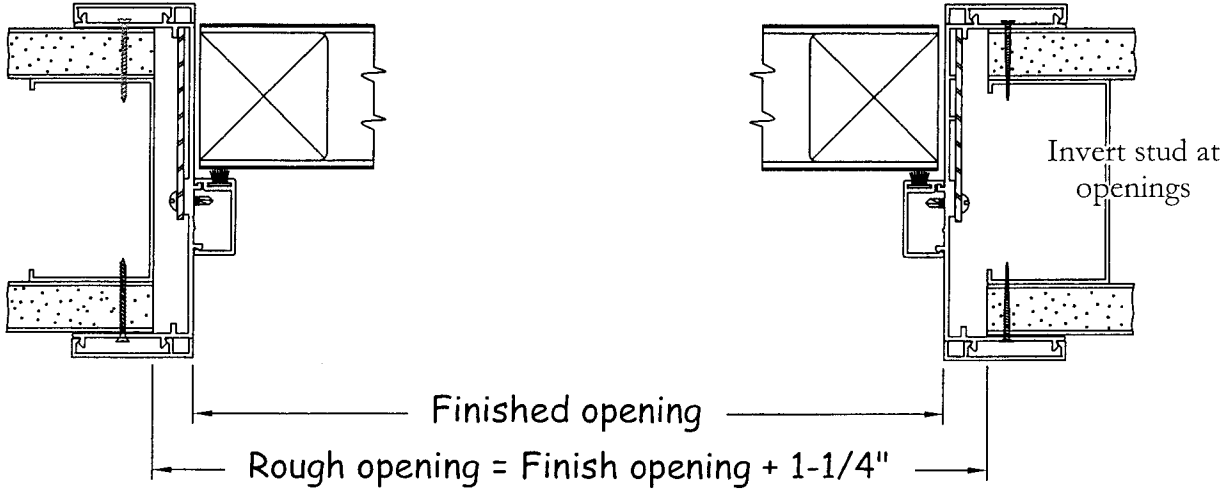


# Frameworks Manufacturing, Inc.

## Type 2 Clipping Diagrams

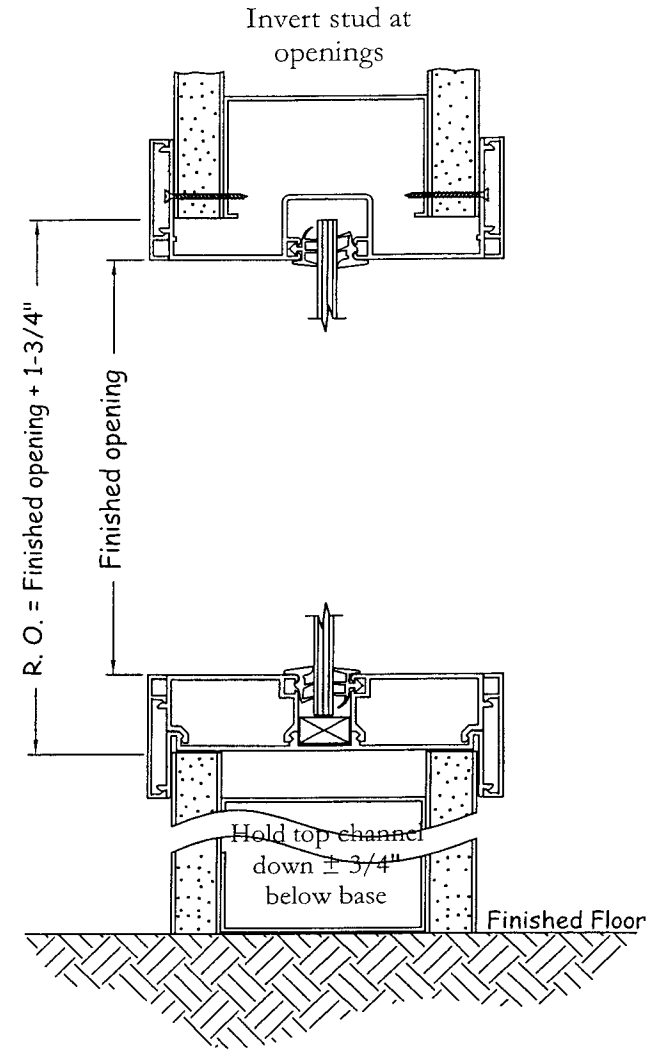
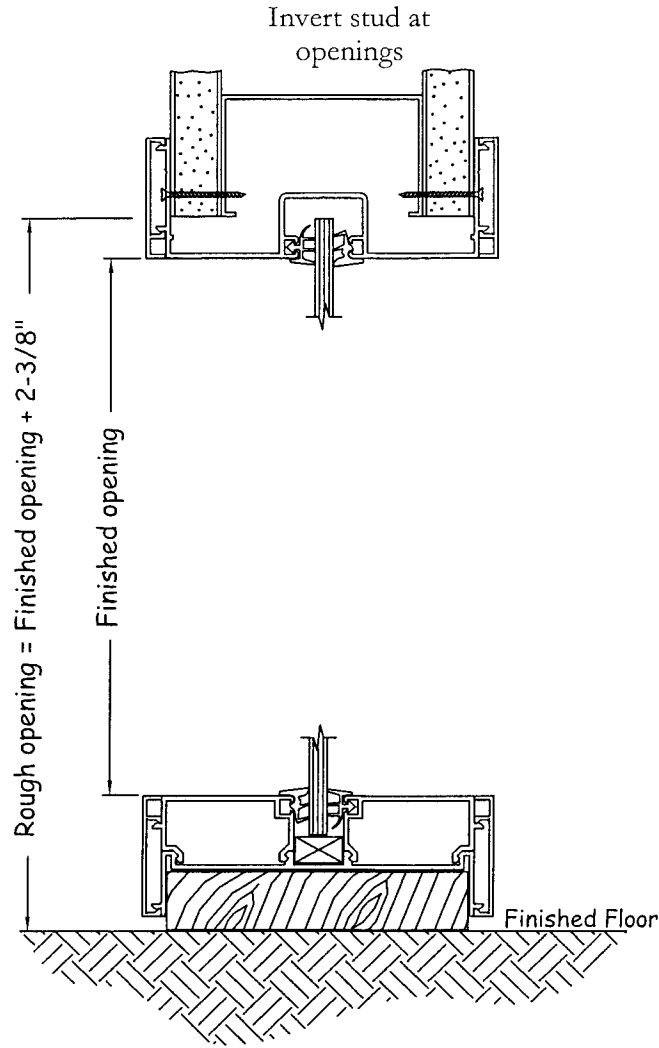
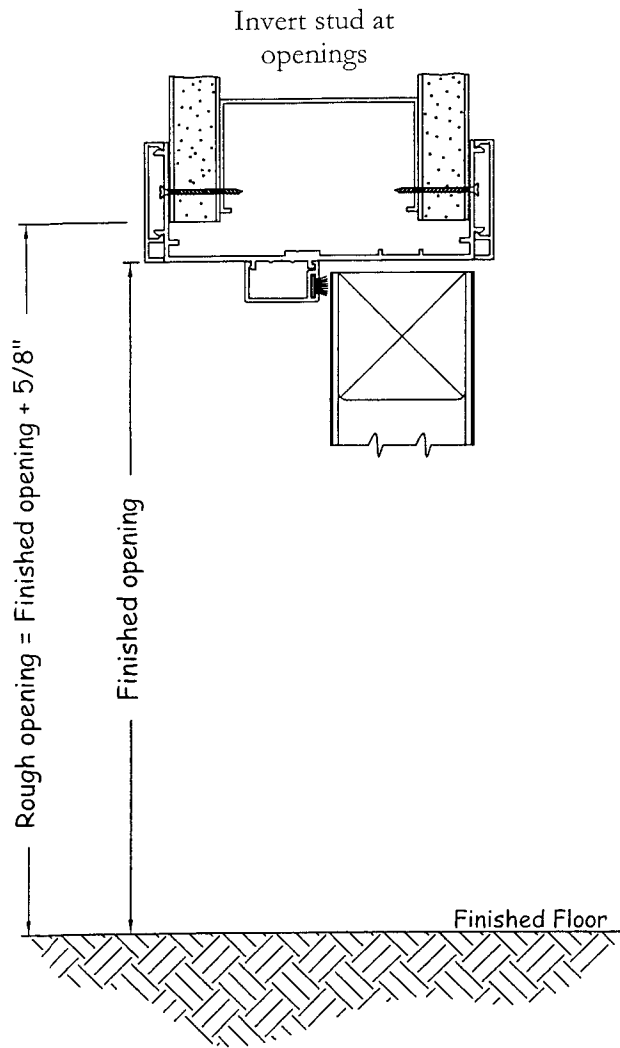


Frameworks Manufacturing, Inc.  
Type 2 Rough Opening Requirements

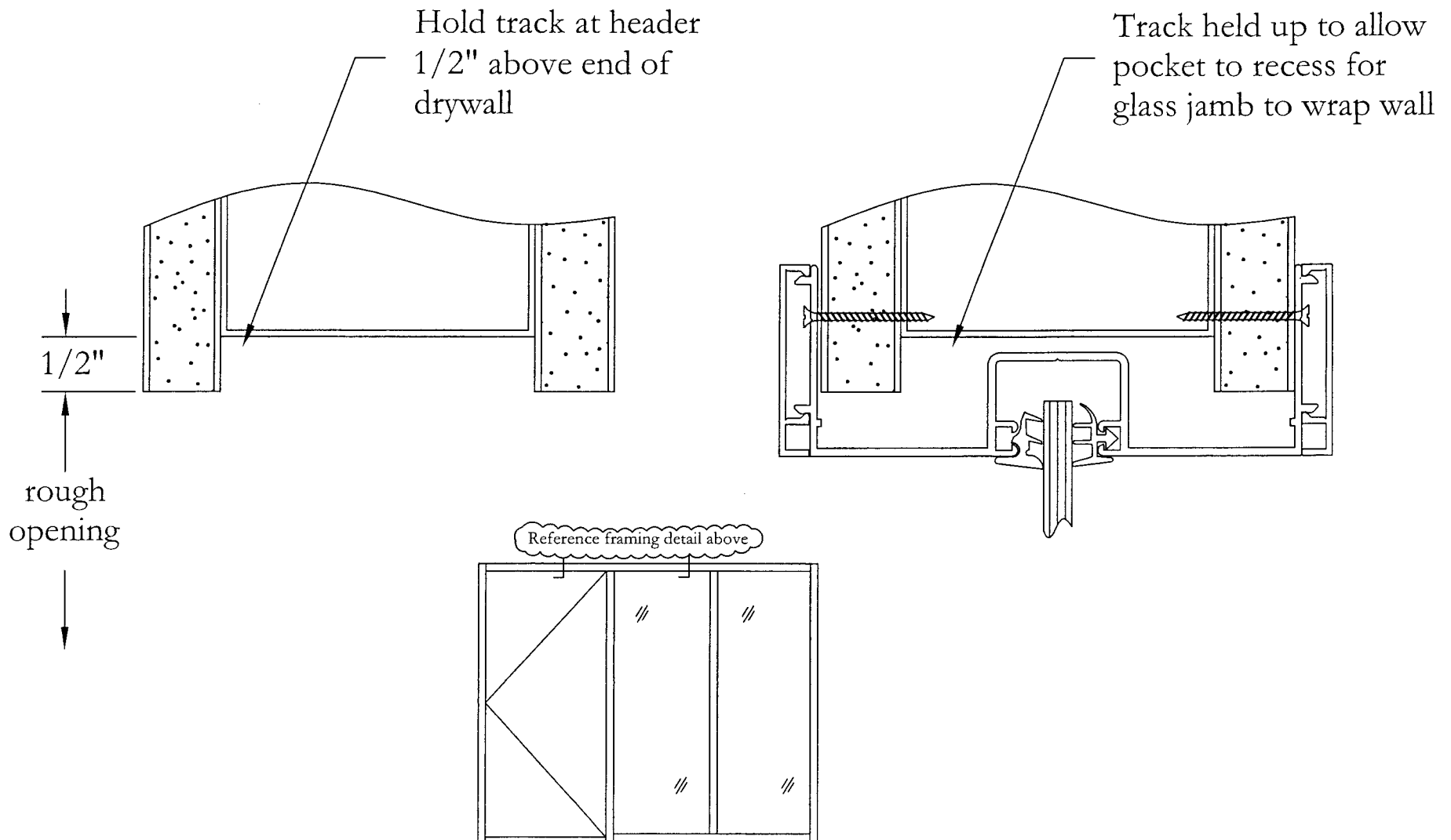


# Frameworks Manufacturing, Inc.

## Type 2 Rough Opening Requirements



**IMPORTANT: Provide this information to the  
drywall framing subcontractor.**



**IMPORTANT: Provide this information to the  
drywall framing subcontractor.**

Invert stud at  
openings

